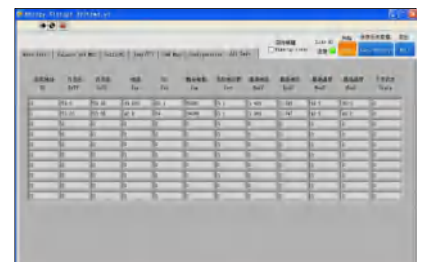


● **25.6KWH Battery Energy Storage System**

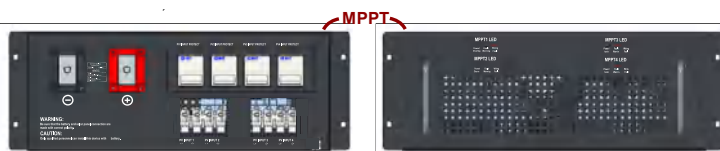
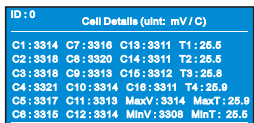
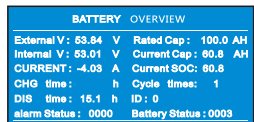
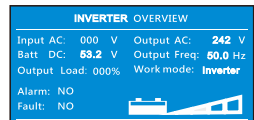
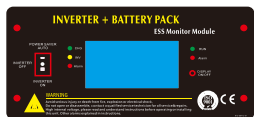
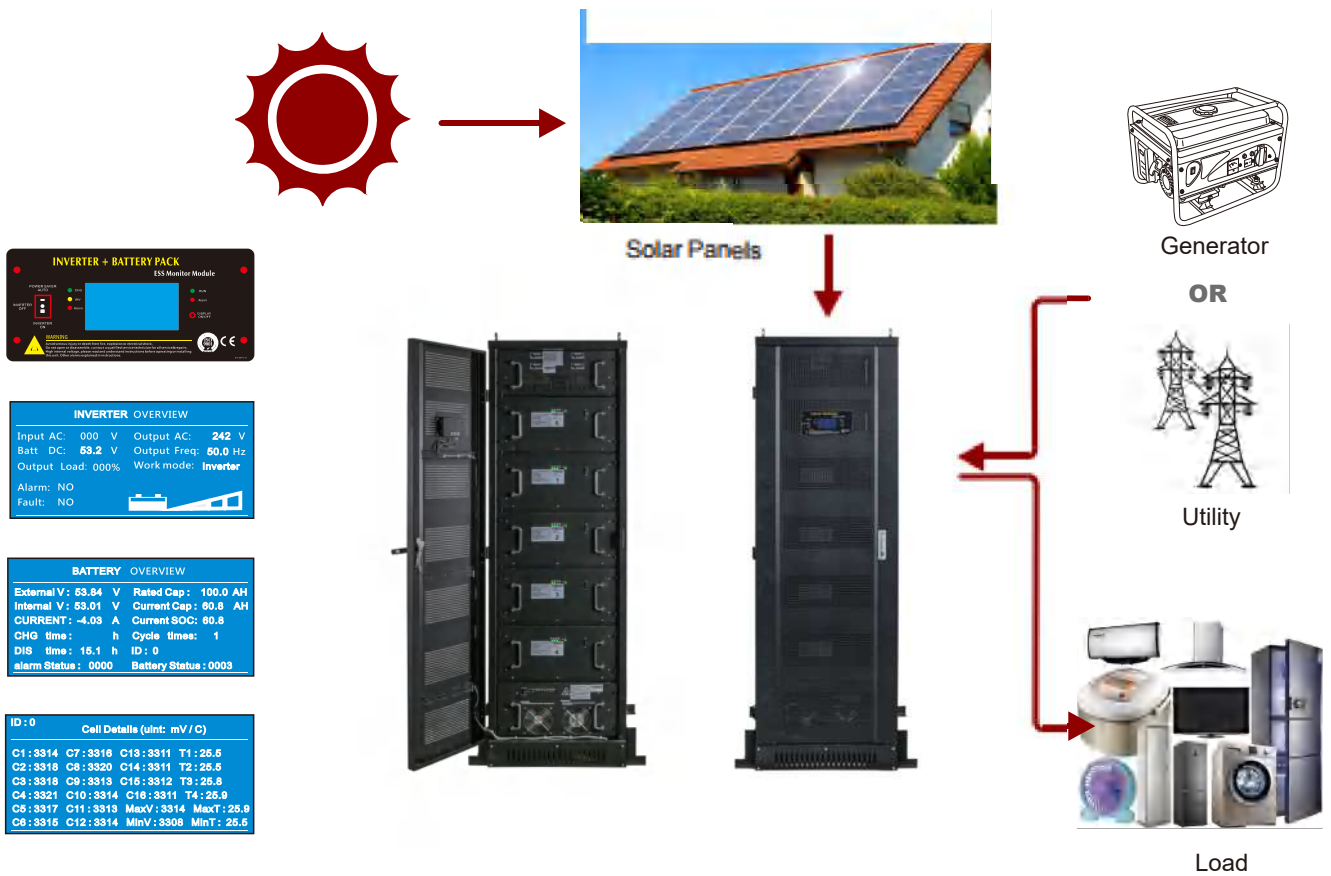
ESS12048E500P4

25.6KWH Battery
12 KW Inverter & AC Charger
240 A MPPT Solar Charger



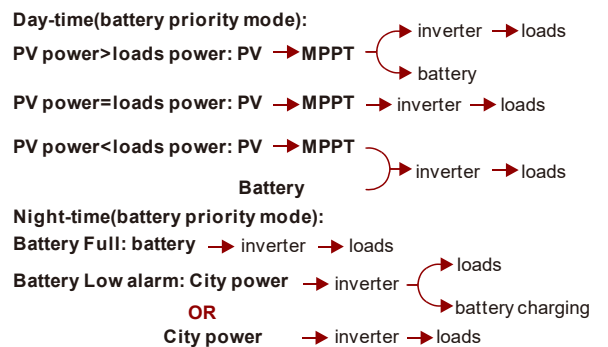
Product Application

Energy storage in power system including solar panels, inverter (for AC and DC conversion), and provide backup power for the main electrical backup lines. Household electricity demand different choice of different components.



WIFI MODULE
Real-time viewing

Loads Power Source



● BASIC Specification

Battery		Description
Normal specification		
1	Rated Voltage	51.2V
2	Rated Capacity	500Ah
3	Rated Energy	25.6KWH
4	Battery Configuration	5.12KWH(16S1P) *5PCS
5	Battery Cell	3.2V100AH 80PCS
Standard Charge		
1	Operation temperature range @charging	0~45°C
2	Rated charge voltage	55.2±0.4V
3	Max charge voltage	56.8±0.4V
4	Overcharge protection	58.4±0.4V
5	Allowed MAX charge current(Total)	275A withstand 30s (every pack 55A)
6	Peak charge current(Total)	300A withstand 5s (every pack 60A)
7	Rated charge current(Total)	250A (every pack 50A)
8	Recommend charge current(Total)	<250A
Standard discharge		
1	Operation temperature range @discharging	-20~60°C
2	Output Voltage Range	40~56Vdc
3	Recommend Working Range	46~54Vdc
4	Discharge Cut-off voltage	40V
5	Allowed MAX discharge current(Total)	550A withstand 30s (every pack 110A)
6	Peak discharge current(Total)	600A withstand 5s (every pack 120A)
7	Rated discharge current(Total)	500A (every pack 200A)
8	Recommend discharge current(Total)	<400A

BASIC Specification

Communication				
1	RS485	For LCD remote		
2	CAN	PC control and monitor		
Inverter (built-in)		Description		
Normal specification				
1	Rated Power	12KW		
2	Output Waveform	Pure Sine Wave/Same as input (Bypass Mode)		
3	Output Voltage	240Vac(H-H)/120Vac(H-N) $\pm 10\%$ RMS		
4	Output Frequency	50 or 60 ± 0.3 Hz (Inverter mode by sw4 setting)		
5	Typical Transfer Time	4-6ms typical,10ms(Max)		
6	THD	< 3%(Rated voltage full R load)		
7	AC Input Range	184-253Vac (UPS mode) or 140-270Vac (GEN mode)		
8	Customized AC Charger	Battery type selector position 9, special design for LFP, make the battery cycle life Maximization		
9	MAX AC Charge Current	100A		
10	Battery priority Function	Setting by SW5 on position 1 (inverter mode valid), AC automatic come in when battery voltage low alarm at 48Vdc or 50Vdc		
11	AC Bypass without charging	Battery type selector position 0		
MPPT (built-in)		Description		
Normal specification				
1	PV POWER	3.0KW*4		
2	PV Input Voltage	60-145Vdc		
3	MPPT Charging Voltage	56.0Vdc (Fast charging)/54Vdc (Float charging)		
4	MPPT Output Current	60A*4		
Model	Configuration			
ESS1204	MPPT	INVERTER	BATTERY	Energy
8E500P4	240A(60A*4)	15KW	500AH(100AH*5)	25.6kwh
Mechanical Characteristics				
ESS1204	Dimension H*W*D	Shipping H*W*D	Weight(N.W.)	Weight(G.W.)
8E500P4	1810*560*785mm	1960*700*870mm	450KG	500KG